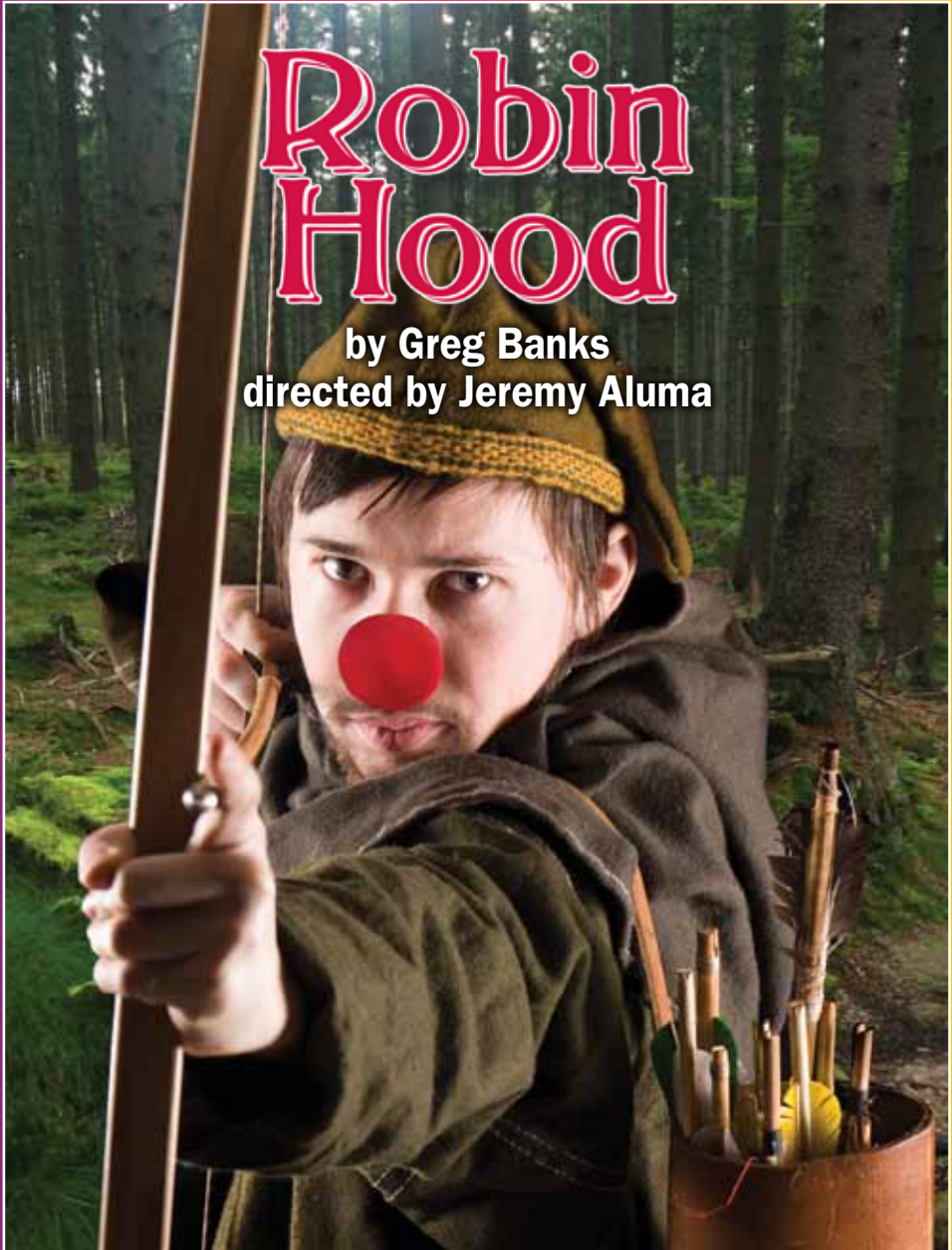


South Coast Repertory Theatre for Young Audiences

2012/13 SEASON • JULIANNE ARGYROS STAGE

Robin Hood

by Greg Banks
directed by Jeremy Aluma



South Coast Repertory Theatre for Young Audiences

Julianne Argyros Stage • November 2 - 18, 2012

Robin Hood

BY **GREG BANKS**

SET DESIGN
FRED KINNEY

FIGHT DIRECTOR
BRIAN DANNER

COSTUME DESIGN
LEAH PIEHL

PRODUCTION MANAGER
JACKIE S. HILL

LIGHTING DESIGN
JEREMY PIVNICK

STAGE MANAGER
JENNIFER ELLEN BUTLER*

DIRECTED BY
JEREMY ALUMA



TARGET.

Corporate Honorary Producer of *Robin Hood*

VISIT SCR ONLINE!
WWW.SCR.ORG

Be sure to check out our website for the study guide to *Robin Hood*, which features additional information about the play, plus a variety of other educational resources.

The Theatre for Young Audiences program is made possible in part by grants from
The Nicholas Endowment and **The Segerstrom Foundation**

The Cast

Actor 1 **AMIR LEVI***
(The Sheriff, King Richard)

Actor 2 **RAYMOND LEE***
(Prince John, Will Scarlett, Soldier,
Little John, Friar Tuck)

Actor 3 **ALEXIS JONES***
(Much, Maid Marian)

Actor 4 **KEVIN KLEIN***
(Robin Hood)

Musician 1 **DANIEL HOPKINS**
(Much's Dad, Alan a Dale, Soldier 2, Archer 2)

Musician 2 **JULIA DAVIS***
(Nat the Weaver, Maid, Soldier 3, Archer 2, Henchman)

For Your Information

NO BABES IN ARMS ALLOWED. Everyone must have a ticket; no children under age four for Theatre for Young Audiences performances.

To cause the least disruption, SCR patrons who have not entered the theatre when the performance begins will be asked to watch the monitors in the lobby until an appropriate break in the performance. Latecomers, as well as those who leave the theatre anytime during the performance, may be assisted to alternate seats by the House Manager at an appropriate interval and may take their assigned seats at intermission. SCR accepts no liability for inconvenience.

Special seating arrangements can be made for disabled patrons in advance by calling South Coast Repertory's Ticket Services Department at (714) 708-5555.

As a courtesy to all patrons, please turn off all cellular phones, pagers and watch alarms or switch them to non-audible mode before the performance begins. If doctors or parents expect calls during a performance, please leave your name and seat number with the House Manager, who can be reached at (714) 708-5500, ext. 5442.

The videotaping or audio recording of this performance is strictly prohibited.

Produced by permission of
Children's Theatre Company
Minneapolis, MN

Produced by special arrangement with
Plays for Young Audiences

A partnership of Seattle Children's Theatre and Children's Theatre Company-Minneapolis



* denotes members of Actors' Equity Association, the union of professional actors and stage managers.

The Legend of Robin Hood

The legend of Robin Hood is one of the most popular outlaw tales of all time. The character of Robin first appeared in 1450 in the story *Robin Hood and the Monk*. His legend can be traced back to England during the Middle Ages—and tells the story of an outlaw who defended the people of Nottingham against the evil Prince John. With his band of Merry Men, Robin stole from the rich to give to the poor—and inspired generations of future stories, songs and films. One of the most popular Robin Hood interpretations is the 1880 novel *The Merry Adventures of Robin Hood* by Howard Pyle, which later inspired playwright Greg Banks to write this stage version!



An illustration of Little John knocking Robin Hood into the cold stream by Howard Pyle



Illustration of Robin Hood and Maid Marian by Howard Pyle



Robin Hood and the Men of Greenwood by NC Wyeth

South Coast Repertory

MARC MASTERSON Artistic Director PAULA TOMEI Managing Director

DAVID EMMES & MARTIN BENSON Founding Artistic Directors

JOHN GLORE Associate Artistic Director

BIL SCHROEDER Marketing & Communications Director

LORI MONNIER General Manager

SUSAN C. REEDER Development Director

JOSHUA MARCHESI Production Manager

These folks are helping run the show backstage

Joanne DeNaut, CSA	CASTING DIRECTOR
Kelly L. Miller	DRAMATURG
Skylar Gray	LITERARY ASSISTANT
Julie Renfro	PRODUCTION ASSISTANT
Turner Munch	ASSISTANT DIRECTOR
Amanda Stuart, Jessica Wiebel	ASSISTANT SCENIC DESIGNERS
Danielle Hollows	ASSISTANT TO THE SCENIC DESIGNER
Natalie Figaredo & Ari Y. Wartell	STAGE MANAGEMENT INTERNS
Sumner Elsworth	LIGHT BOARD OPERATOR
Victor Mouledoux	AUTOMATION OPERATOR
Deona Offield	DRESSER
Gieselle Blair	WIG & MAKEUP TECHNICIAN
Amanda Avila, Pauline Good, Debra Green, Deona Offield	ADDITIONAL COSTUME STAFF

And these folks helped get it ready for you

THESE FOLKS BUILT THE SCENERY	THE FOLLOWING MADE THE COSTUMES
Jon Lagerquist, TECHNICAL DIRECTOR	Amy L. Hutto, COSTUME SHOP MANAGER
John Gaddis IV, ASSISTANT TECHNICAL DIRECTOR	Catherine J. Esera, CUTTER/DRAPER
Amanda Horak, MASTER CARPENTER	Laurie Donati, FULL CHARGE COSTUMER
Jeff Castellano, David Saewert, SCENIC CARPENTERS	Laura Caponera, WIG AND MAKEUP SUPERVISOR
Victor Mouledoux, AUTOMATION TECHNICIAN	Gieselle Blair, WIG AND MAKEUP TECHNICIAN
Judy Allen, LEAD SCENIC ARTIST	Bert Henert, WARDROBE SUPERVISOR
Nathan Brackney, Chris Holmes, SCENIC ARTISTS	THIS GROUP DEALS WITH LIGHTS & SOUND
THESE PEOPLE CREATED THE PROPS	Lois Bryan, MASTER ELECTRICIAN
Lynn Downey, PROPS MASTER	Aaron Shetland, Sumner Elsworth STAGE ELECTRICIANS
Byron Bacon, ASSISTANT PROPERTY SHOP MANAGER/BUYER	Sam Lerner, AUDIO ENGINEER
Jeffery G. Rockey, Andrea Bullock, PROPERTIES ARTISANS	GW Rodriguez, AUDIO TECHNICIAN

Outlaw Heroes

Robin Hood is the most famous outlaw hero of all time. An **outlaw** is a fugitive from the law, or a person who does not follow the rules. A **hero** is a person who has courageously risked his life for the sake of someone else. So how can you be both? Robin Hood is a great example of a person who disobeyed the law in order to help others. Robin even lived by the phrase “steal from the rich to give to the poor.” Can you match the outlaw description from the list of famous outlaws below?



This outlaw, whose name in Spanish means “fox,” wore a mask and protected the people of California from the greed of the government.

answer: _____



This Lost Boy flew around Neverland evading age and the rules of parents.

answer: _____



This Wild West outlaw was only a teenager when he was wanted by the law for his devious acts.

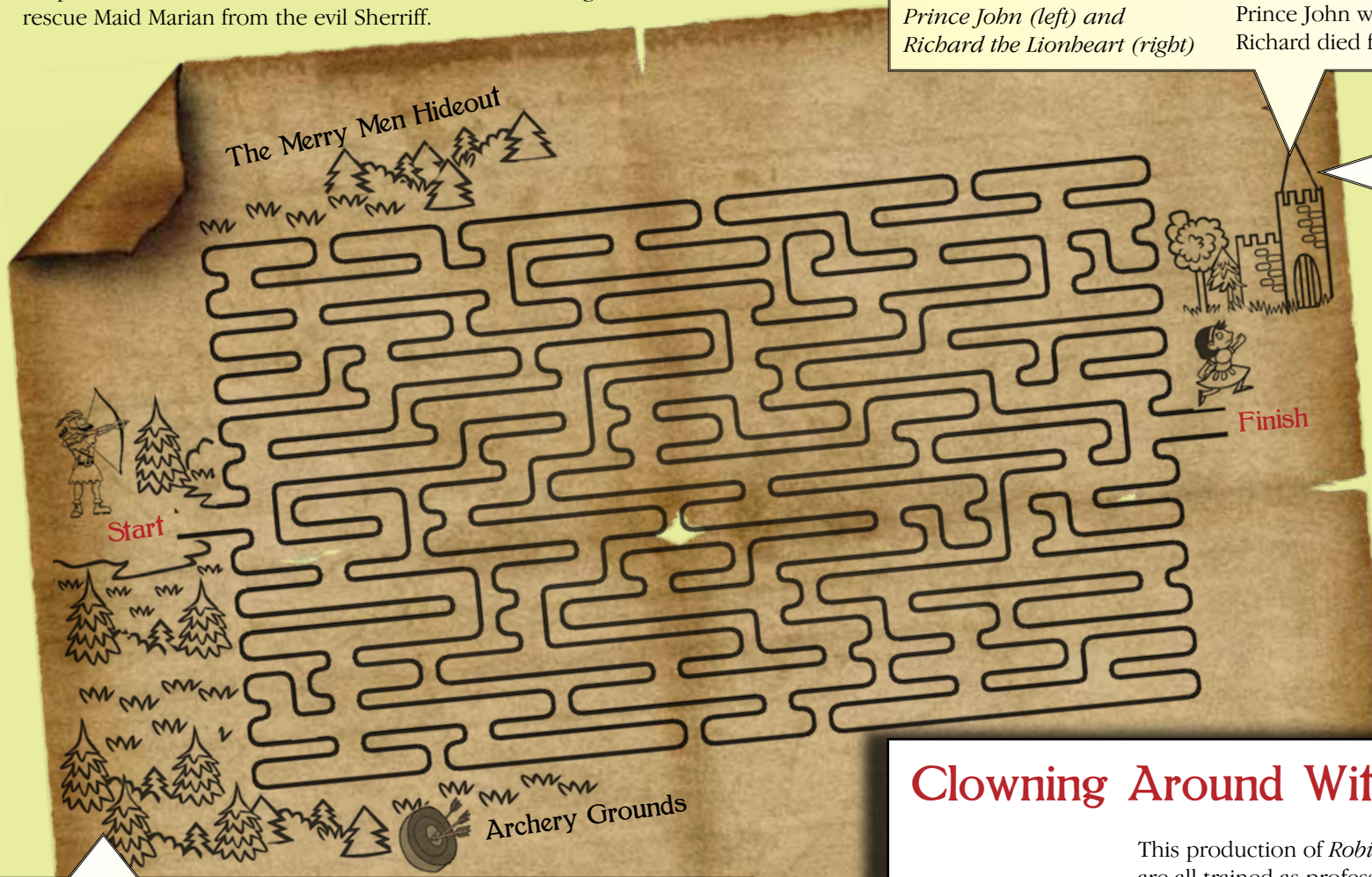
answer: _____

CHOICES:

- A. Billy the Kid
- B. Zorro
- C. Iron Man
- D. Han Solo
- E. Peter Pan
- F. The Lone Ranger

The A-MAZE-ing Sherwood Forest

Help Robin Hood travel from Sherwood Forest to Nottingham Castle to rescue Maid Marian from the evil Sherriff.



Sherwood Forest is a real forest in Nottinghamshire located in the East Midlands of England. Every year Sherwood Forest hosts the Robin Hood Festival which includes jousting, archery and an appearance by Robin Hood himself!



Prince John (left) and Richard the Lionheart (right)

Brothers Of The Crown

Prince John and King Richard are not only characters in *Robin Hood*, but were actual kings in the late 1100s. Even though Richard was the king, Prince John led a rebellion while he was away fighting in the Third Crusade. It is also true that Richard was loved by the people and John was detested. Sadly, Prince John was crowned king in 1199 after Richard died from a war-related injury.



Nottingham Castle

was home to countless kings during the Middle Ages, but was destroyed in 1651. A large manor was built on top of the castle grounds and it now serves as a Museum of Fine Art for the people of Nottingham.

Clowning Around With Robin Hood



This production of *Robin Hood* features actors who are all trained as professional clowns! The actors in this production use the art of improv and clowning to create their imaginative stories. Clowning is not just for red-nosed, big-haired entertainers; the art of clowning means to perform through jokes, antics and tricks. That means when you play you are clowning every day!

Who's Who

In the Cast



Julia Davis

Musician 2
(Nat the Weaver, Maid, Soldier 3,
Archer 2, Henchman)

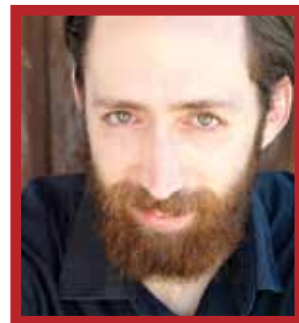
Do you know why I love being in this production of *Robin Hood*? It's because I get to do two of my favorite things: acting and playing the flute. I have been doing both since I was a kid and I love them equally. I never wanted to have to choose between the two. It's like choosing only one ice

cream flavor to eat for the rest of your life! But shows like *Robin Hood* let me do both. I have been able to do both in other shows too; last summer I was in a show at The Getty Villa where I got to play a bird who knows how to play the flute. That may sound silly, but it really is a lot of fun! As long as you do everything that you love, you will be a very happy person. Try it!

Daniel Hopkins

Musician 1
(Much's Dad, Alan a Dale,
Soldier 2, Archer 2)

I was born with a musical ear. Okay, well, actually I was born with two musical ears (and they don't make music by themselves, unfortunately). When I was in 4th grade I started playing trumpet in my school's band, and from that point on I just started grabbing any instrument I could find and attempting to make decent sounds come out of it. I play music every day, not because anyone is telling me to, but because I love it that much! I've also always loved to act, and over the last decade I've been putting music and acting together for vaudeville and variety shows all across the country. My sister lives in New York City and is also an actor and singer, and I think that's just about the coolest thing ever! Anyway, I hope you have as much fun watching *Robin Hood* as I do playing in it!



Alexis Jones

Actor 3
(Much, Maid Marian)

I grew up watching a lot of television and films. I knew that what the actors did on those screens looked like so much fun but I didn't know what I could do to accomplish my dream of becoming an actress. Finally, my 5th grade drama class had auditions for *The Gingerbread Man*, and even though I was scared, I tried out for the play. I was very nervous, but lo, and behold, I got a role! And not just any role, I was cast as the Gingerbread Man himself! It was the most fun I had ever had and I just wanted to continue having that much fun. Since then I've been in many more stage shows, have gone to clown school and even had the chance to clown on "Dancing With The Stars!" This will be my first time at SCR, and I am very excited to perform for all of you!



Kevin Klein

Actor 4
(Robin Hood)



When I was in 5th grade, I volunteered to play Scrooge in *A Christmas Carol* by Charles Dickens. It was scary to volunteer at the time, but playing this role when I was 10 years old turned out to be one of the best things I ever did! It inspired a passion for performing that still burns bright inside me even to this day. Out of all the different styles of theatre in which I have trained, I particularly love being a clown. Clowning is great because I can be funny and free. I have performed as a clown all over the country with my friends. As an artist, I am inspired by many things. Family, friends, teachers, and nature fuel my body and mind with material that I use in performances. This is the first production you will see me in at SCR. I hope you enjoy my portrayal of the character Robin Hood. I hope I can inspire you like I have been inspired many times throughout my life.



Raymond Lee

Actor 2

(Prince John, Will Scarlett, Soldier, Little John, Friar Tuck)

When I was in 4th grade, my teacher put me in front of a hundred people and told me to sing a song. I was terrified and embarrassed. But after much encouragement, I began to sing. I don't remember singing the song but I do remember the embrace of the audience's applause. Since then, that is all I've been chasing, and it's been the most

uplifting journey one could wish for. This is my third time performing here at SCR and I am overjoyed to be back. I've also traveled across America with my clown troupe, performing in such cities as Chicago, Minneapolis and Las Vegas. My favorite television roles include "How I Met Your Mother" and "Zach Stone Is Gonna Be Famous" and I've done films and commercials as well. Along with acting I love staying active in the outdoors and hanging with my best friends. theraymondlee.com, fourclowns.org

Amir Levi

Actor 1

(The Sheriff, King Richard)

As you read this, please know that I'm not as mean in real life as I am in the show. I actually like kids and teach theater in different schools! It's really exciting to be here at SCR for the first time because it's such a large stage, and I get to act with my friends (the actor who plays Robin Hood and I were once roommates). I've done some commercials and movies. My favorite commercial was where I got to act with a real wolf. I love to read in my free time and I have two awesome cats. theamirlevi.com

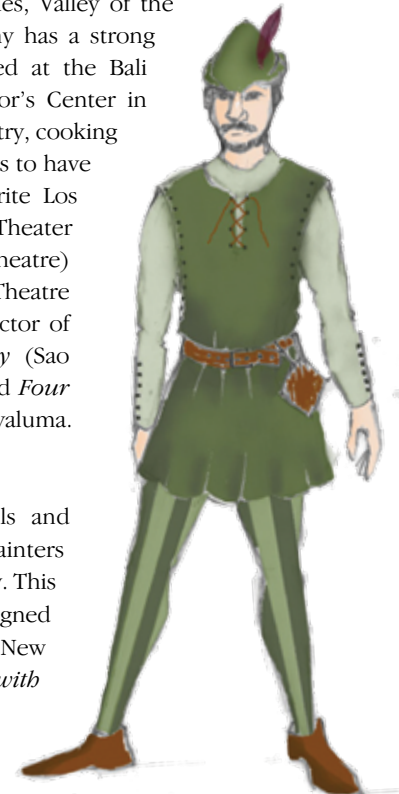


Artist Bios

PLAYWRIGHT GREG BANKS has been working as an actor, writer and director since 1979. His work has taken him from Singapore to Seattle via Moscow, New York and the Arctic Circle. Whilst building a reputation for making and touring new work in small scale venues throughout the UK in the '80s, his work has also been seen in the West End and at the New Victory on Broadway. Companies include The Bristol Old Vic, Plymouth Theatre Royal, The Unicorn, Polka, Minneapolis Childrens Theatre, Theatre Alibi, Travelling Light, M6, New Perspectives, Fair Game Theatre and Birmingham Stage. Scripts and adaptations which he has also directed, include *Tir Na N'og* from Jim Sheridan's film *Into the West*, *Why the Whales Came* from the novel by Michael Morpurgo and *Huck Finn*. His adaptations of *Robin Hood* and *Pinnocchio* are currently being produced in the United States where he has also directed and adapted promenade performances of *Antigone* and *Romeo and Juliet*.

DIRECTOR JEREMY ALUMA is an award-winning theatre director and producer. He has directed all over the country including The Big Apple, The Windy City, Sin City, The Twin Cities, Valley of the Sun and throughout The City of Angels. Jeremy has a strong background in mask and clown, having trained at the Bali Master Conservatory in Indonesia and the Actor's Center in New York City. He loves driving around the country, cooking new concoctions and climbing trees. His dream is to have 13 children and 1 monkey. Some of his favorite Los Angeles credits include *Crumble* (Sacred Fools Theater Company), *In Arabia We'd All Be Kings* (Alive Theatre) and *The Last Days of Judas Iscariot* (Urban Theatre Movement). He is the founder and artistic director of Four Clowns where he has directed *Sublimity* (Sao Paulo, Brazil), *Four Clowns: Romeo & Juliet* and *Four Clowns* (SCR and Long Beach Playhouse). jeremyaluma.com, fourclowns.org.

SET DESIGNER FRED KINNEY builds the models and creates the drawings that the carpenters and painters make into the scenery that you see on stage today. This is Fred's seventh production at SCR; he also designed The Elephant for *The Emperor's New Clothes*, New Duck City for *Lucky Duck*, a marsh for *A Year with Frog and Toad* and three worlds and an evil brain for *A Wrinkle in Time*. When he was



"Robin Hood" costume sketch by Leah Piehl.

just a small boy, he thought he might become a painter, sculptor or an architect. In high school, he started to design the school productions and really enjoyed it, and still does. He is the proud father of Kate and Gigi, who will be enjoying their first TYA show about three years from now.

COSTUME DESIGNER LEAH PIEHL loves to play dress up. As a kid she used to create and sew outfits to look just like her favorite pop stars. She continued to dress up in costumes even when she grew up and decided that she would like dress up other people, too! Leah went to the California Institute for the Arts to learn more about theatre and costume design. Her favorite part of her job is creating characters and telling stories through drawing and painting her designs. She designs costumes for many theatres around the country and for television and film as well. She recently designed *The Borrowers* at SCR. You can look at more of her work at leahpiehl.com

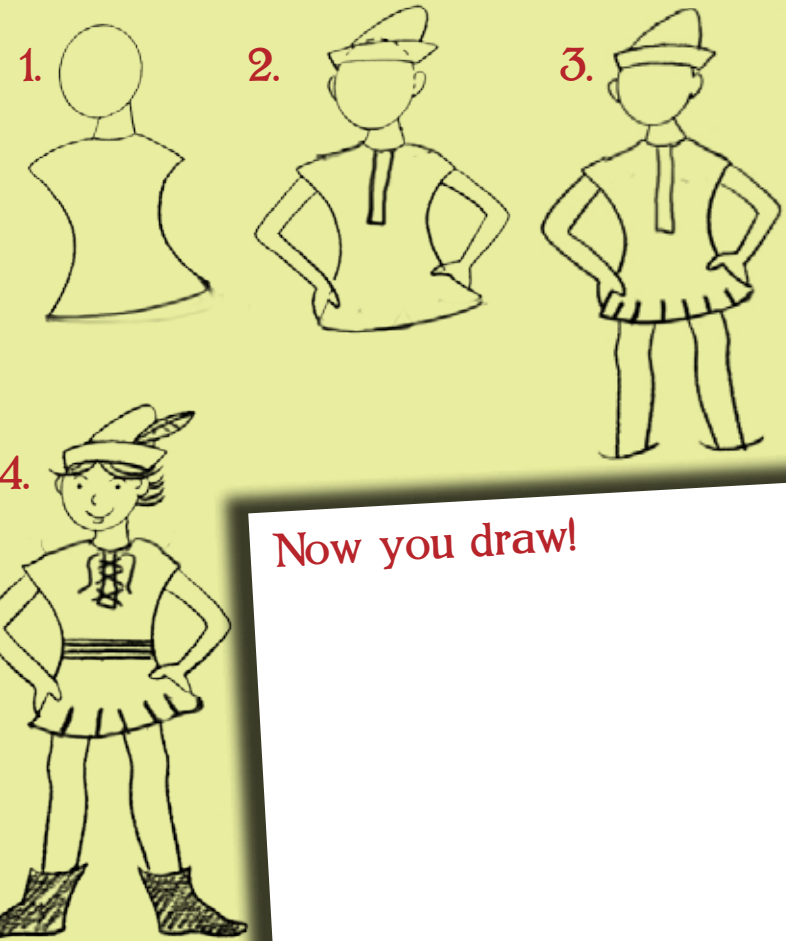
LIGHTING DESIGNER JEREMY PIVNICK is excited to be back for his second show at SCR. While Jeremy really likes hanging out in the woods, he doesn't look that great in tights. He works with clowns a lot and they are always fun and creative. It's pretty exciting to take a classic story and reimagine it in some new way that no one has seen. Jeremy designs shows all over the world, including in New York, San Francisco, Washington D.C., Scotland and Ireland. Thanks to everyone who made this show such fun to work on!

STAGE MANAGER JENNIFER ELLEN BUTLER started doing theatre in the 5th grade, and she loved it so much she never stopped. She was an actor and crew member until she learned about the wonders of stage managing! She went to college and got a degree in theatre from the beautiful University of California, Santa Cruz, and now stage managing is her full-time job. Stage managers don't get to act crazy on stage, but they still have a lot of fun (yes, organizing and paperwork are fun). During the show, she sits behind you in the back of the theatre in a room called the booth and tells everyone what to do and makes sure the show goes smoothly.



"Maid Marian" costume sketch by Leah Piehl.

Learn to Draw Robin Hood



Now you draw!

How to be a Merry Man (or Woman)!

Robin Hood is looking for loyal and creative kids to join his band of Merry Men. Do you think you have what it takes to join Robin on his quest?

Complete the activities below to see if you make the cut!



1. Test of Creativity

Your first test is to create an instrument to join Robin's musical band. For this task you can only use recycled materials and your imagination!

To create a recycled guitar, you must have:

- a tissue box
- 4 rubber bands
- a pencil
- a ruler
- tape

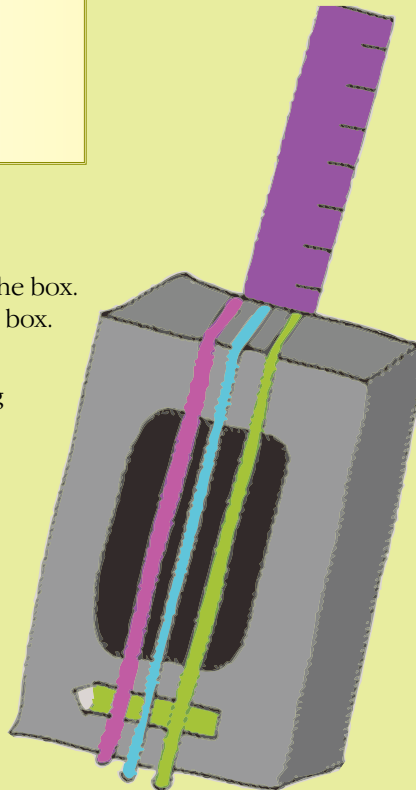
Step 1: Empty the tissue box.

Step 2: Stretch the rubber bands around the box. Make sure they go across the opening on the box.

Step 3: Place a pencil between the opening of the box and the rubber bands. This will allow the sound to resonate.

Step 4: Tape the ruler to the back of the tissue box for a handle.

Step 4: Pluck the rubber bands to create a musical masterpiece!



2. Test of Smarts: Marian's Match Game

For your next task, you must match each of the following words with the correct definition. (Answers below)



- | | |
|------------------|--|
| _____ 1. Merry | A. Faithful to a person or idea. |
| _____ 2. Protect | B. A person who betrays another's trust. |
| _____ 3. Loyal | C. To grab with sudden force. |
| _____ 4. Seize | D. To shield from injury. |
| _____ 5. Cunning | E. Cheerful and lively. |
| _____ 6. Traitor | F. Craftiness or trickery. |

3. Test of Character:

Lastly, to join Robin's band you must be a person of character. Answer each of the following questions with an example of something you can do!

1. How can you give back to the poor like Robin?

2. What does it mean to be a loyal friend?

4. Congratulations!

You are now one of Robin's Merry Men! It is time to christen yourself with a name, just like Much and Little John did. What would your name be as a Merry Man or Woman?

Your New Name: _____

Clothes Make the Character!



Green striped tights. Bright colors. That's what some of the actors are wearing today as costumes in Greg Banks' *Robin Hood*. Do you have any tights or leotards at home? Could you be a Merry Man or Merry Woman?

Costumes are fun! Walk into South Coast Repertory's Costume Shop during the season and you'll hear and see a lot: sewing machines hum, rolls of fabric and actors being fitted for their costumes! Last year, the shop created 240 costumes for all of SCR's regular performances and 140 costumes for *A Christmas Carol*. The summer kids and teens production of *Seussical* had 70 costumes!

"In *Seussical*, an actor added a hat with ears to be an elephant, a tutu to be a bird, or a tail to become the Cat in the Hat or monkey or kangaroo," says Hisa Takakuwa, director of SCR's educational programs and conservatory. "Many of the actors played more than one character or had their characters change or grow in some way; that was reflected in their costumes and helped the audience to understand the story."

"Your personal 'costume' may change from school clothes to soccer uniform to fancy dress for a birthday party to pajamas!"

—Hisa Takakuwa

You can create costumes—and then a story—at home using your imagination! Just look in the closets around your house:

- A vest could become the top of a suit of armor.
- A scarf could become superhero cape.
- A dress could be a princess' gown.
- A hat could be a space suit helmet.

Find some clothing pieces in closets and drawers or bins at home. What colors and patterns do you like?

Then, create in your mind the characters and their costumes and make up a story! You're well on your way to having a great home stage production!

South Coast Repertory Theatre for your entire family

"ORANGE COUNTY'S MOST REGAL AND SUMPTUOUS THEATRICAL FEAST!"
—Orange County Register

CHARLES DICKENS' **A CHRISTMAS CAROL**

ADAPTED BY JERRY PATCH
DIRECTED BY JOHN-DAVID KELLER

Nineteenth century London comes to life with Tiny Tim, the Fezziwigs, Bob Cratchit and old Ebenezer Scrooge himself. It's an Orange County tradition!

Nov 24 - DEC 24 AGES 6 AND UP.

Honorary Producers: JULIA AND GEORGE ARGYROS/ARGYROS FAMILY FOUNDATION
Media Partner: ORANGE COUNTY REGISTER

(714) 708-5555 • scr.org/christmas

Hill Landon Jr. as Scrooge. Photo: Henry DiPietro.

Theatre for Young Audiences

Share the magic of live theatre with your family! Ages 4 and up.

ANASTASIA KRUPNIK
adapted by Meryl Friedman
from the book by Lois Lowry
She's ten years old, growing up fast—and irresistible.
Feb 8 - 24, 2013

THE NIGHT FAIRY
a new adaptation by John Glore
from the book by Laura Amy Schlitz
A magical story of a nighttime creature in a daylight world.
May 24 - June 9, 2013 Pending rights.

(714) 708-5555 • scr.org

Folino Theatre Center • 655 Town Center Drive, Costa Mesa, CA 92626 • Segerstrom Center for the Arts

THANK YOU

• Annual Support •

SCR gratefully acknowledges the following donors for generously providing special underwriting support during the 2012/13 Season of Theatre for Young Audiences and other educational programs.

The Nicholas Endowment • The Segerstrom Foundation
Bank of America Foundation

The Capital Group Companies • Abbott Medical Optics
Pacific Life Foundation • Emulex
Robert & LaDorna Eichenberg • Nordstrom •
D.L. Halsell Foundation • Target • The Alcon Foundation

• Corporate Circle Partner •

Allergan Foundation • Molton Brown
Schweickert & Company • Wells Fargo Bank

• Corporate Circle Sponsor •

Bank of America • Boeing Employees Community Fund
California First National Bancorp • Citizens Business Bank
City National Bank • Deloitte • Deutch Bank
KPMG • SingerLewak, LLP • Edison International
Edwards Lifesciences • Fluid Research • Jones Day

• Endowment Support •

The long-term development of Theatre for Young Audiences and other education programs at SCR is greatly assisted by the establishment of endowment funds. We deeply appreciate the following donors who have honored us with gifts:

Folino Family Education & Theatre for Young Audiences Endowment
General and Mrs. William Lyon Education & Outreach Endowment
Camille and Eric Durand Endowment
Pam & James Muzzy Endowment for Young Audiences
Sue & Ralph Stern Endowment for Young Audiences
William Randolph Hearst Endowed
Education and Outreach Fund
Yvonne & Damien Jordan Theatre for Young Audiences Endowment
Draper Family Endowment