



# South Coast Repertory

THEATRE FOR YOUNG AUDIENCES & FAMILIES

2022/23 SEASON • JULIANNE ARGYROS STAGE



Adapted by **Greg Banks**  
Directed by **H. Adam Harris**

**NOV. 4-20, 2022**

# THANK YOU

## ANNUAL SUPPORT

*SCR gratefully acknowledges the following donors for generously providing special underwriting support during the 2022/23 Season of Theatre for Young Audiences & Families and other educational programs.*

## THEATRE FOR YOUNG AUDIENCES AND FAMILIES

### The Segerstrom Foundation

Leona Aronoff-Sadacca  
Union Bank

## EDUCATION PROGRAM SPONSORS

Bank of America Foundation  
Capital Group  
Pacific Life Foundation

Canterbury Consulting  
Gibson Dunn  
Montauk TriGuard

## ENDOWMENT SUPPORT

*The long-term development of Theatre for Young Audiences and other educational programs at SCR is greatly assisted by the establishment of endowment funds. We deeply appreciate the following donors who have honored us with gifts:*

Folino Family Education & Theatre for Young Audiences Endowment  
General & Mrs. William Lyon Education & Outreach Endowment  
Camille & Eric Durand Endowment  
Pam & James Muzzy Endowment for Young Audiences  
Sue & Ralph Stern Endowment for Young Audiences  
William Randolph Hearst Endowed Education & Outreach Fund  
Yvonne & Damien Jordan Theatre for Young Audiences Endowment  
Draper Family Endowment



# South Coast Repertory

**DAVID IVERS**  
Artistic Director

**PAULA TOMEI**  
Managing Director

**DAVID EMMES & MARTIN BENSON**  
Founding Artistic Directors

PRESENTS



ADAPTED BY **GREG BANKS**  
DIRECTED BY **H. ADAM HARRIS**

SET DESIGNER  
**FRED KINNEY**

COSTUME DESIGNER  
**RAMZI JNEID**

LIGHTING DESIGNER  
**ANDREA HEILMAN**

COMPOSER/ARRANGEMENTS/MUSICAL DIRECTION  
**LEELA OLESZKIEWICZ**

CASTING  
**JOANNE DeNAUT, CSA**

STAGE MANAGER  
**NATALIE FIGAREDO\***

HONORARY PRODUCER  
**LEONA ARONOFF-SADACCA**

CORPORATE ASSOCIATE HONORARY PRODUCER



*Produced by special arrangement with Plays for a New Audience.*

Theatre for Young Audiences & Families is made possible in part by a major grant from  
**THE SEGERSTROM FOUNDATION**

# The Cast

Dwarf Four ..... DEREK MANSON\*

Snow White ..... CANDACE NICHOLAS-LIPPMAN\*

Keyboard Player ..... PHILLIP MATSUURA

Horn Player..... MATTHEW MCGRAW

*\*Members of Actors' Equity Association, the Union of Professional  
Actors and Stage Managers in the United States.*

## For Your Information

NO BABES IN ARMS ALLOWED. Everyone must have a ticket; children under the age of four will not be admitted to Theatre for Young Audiences & Families performances.

To cause the least disruption, patrons who have not entered the theatre when the performance begins will be asked to watch the show on lobby monitors until an appropriate break in the performance. Latecomers, as well as those who leave the theatre anytime during the performance, may be assisted to alternate seats by the House Manager at an appropriate interval and may take their assigned seats at intermission. SCR accepts no liability for inconvenience.

Special seating arrangements may be made in advance for disabled patrons by calling South Coast Repertory's Ticket Services Department at (714) 708-5555.

As a courtesy to all patrons and the actors, please turn off all electronic devices or switch them to non-audible mode before the performance begins.

Photographing, videotaping or other video or audio recording during the performance is strictly prohibited.

Be sure to check out our website for the *Snow White* study guide, which features additional information about the play, plus a variety of other educational resources. **scr.org**

Media Partner



# These folks help bring all of our shows to life

**DAVID IVERS**  
Artistic Director

**PAULA TOMEI**  
Managing Director

**DAVID EMMES & MARTIN BENSON**  
Founding Artistic Directors

**KIM MARTIN-COTTEN**  
Associate Artistic Director

**CLARE KIKLOWICZ**  
Director of Development

**LORI MONNIER**  
General Manager

**BIL SCHROEDER**  
Marketing & Communications Director

**HISA TAKAKUWA**  
Conservatory & Educational Programs Director

## These folks are helping run this show backstage

Gloria Perez – **ASSISTANT STAGE MANAGER**  
Maisie Chan – **INTERIM PRODUCTION MANAGER**  
Ramzi Jneid – **PRODUCTION OFFICE MANAGER**  
Erika Clark – **PRODUCTION ASSISTANT**  
Drea Little – **ASSISTANT SET DESIGNER**  
Peter Mitchell – **STUDIO ASSISTANT**  
Audrey Cook – **COSTUME DESIGN ASSISTANT**

Jimmy Balistreri – **ASSISTANT LIGHTING DESIGNER**  
Hannah Ferla – **LIGHT BOARD OPERATOR**  
Spencer Toler – **SOUND BOARD OPERATOR**  
Ben Morrow – **AUTOMATION OPERATOR**  
Corbyjane Troya – **WARDROBE SUPERVISOR/DRESSER**  
Betsy Ruck – **HOUSE MANAGER**

## And these folks helped get it ready for you

### THESE FOLKS BUILT THE SCENERY

Jon Lagerquist – **TECHNICAL DIRECTOR**  
John Gaddis IV – **ASSISTANT TECHNICAL DIRECTOR**  
Saskia Martinez – **SCENIC CHARGE ARTIST**

### THESE PEOPLE CREATED PROPS

Jenna Scordino – **INTERIM PROPS SUPERVISOR**  
Byron Bacon – **PROPS BUYER**  
Madi Joseph – **PROPS ASSISTANT**

### THE FOLLOWING MADE THE COSTUMES

Amy L. Hutto – **COSTUME SHOP MANAGER**  
Laurie Donati – **FULL CHARGE COSTUMER**  
Isabella Weiland – **CUTTER/DRAPER**  
Jordan Bridges, Lisa Lawrence – **STITCHERS**

### THIS PERSON FIXED THE HAIR & MAKEUP

Allison Lowery – **HAIR & MAKEUP SUPERVISOR**

### THIS GROUP DEALT WITH LIGHTS & SOUND

John Favreau – **SOUND & VIDEO SUPERVISOR**  
Kara Ramlow – **LIGHTING SUPERVISOR**  
Hannah Ferla – **ELECTRICIAN**

# Journey Through



**START**



The **RED FOX** is a very athletic animal. It can run up to 31 miles per hour, jump more than six feet and even swim!



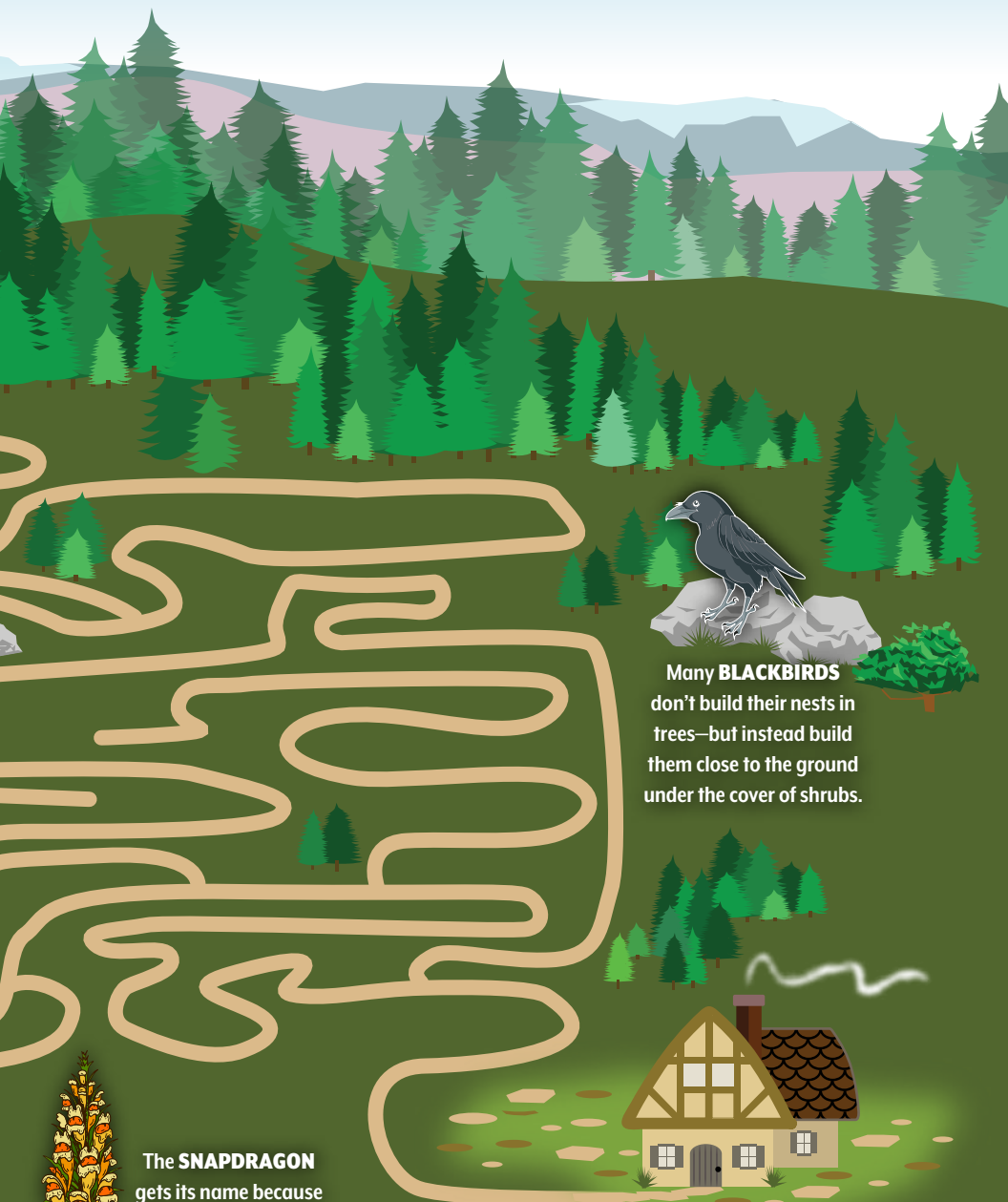
**BADGERS** have small eyes and poor eyesight, but their excellent sense of smell and acute hearing help them find food easily. Badgers are omnivores, which means they eat plants and animals. Their diet consists of earthworms, slugs, fruits, acorns and even mice.



The **SPOTTED OWL** lives in dense forests and is mostly nocturnal, which means it's most active during the nighttime. They can live for up to 17 years!



# Snow White's Forest



Many **BLACKBIRDS** don't build their nests in trees—but instead build them close to the ground under the cover of shrubs.

The **SNAPDRAGON** gets its name because its flowers look similar to a dragon's face—and squeezing the sides of the flower makes the "mouth" open and shut.

**FINISH**

**Can you find and circle all  
the words in the word search?**

**PRINCESS**

**MIRROR**

**CASTLE**

**FOREST**

**STEPMA**

**DWARF**

**COFFIN**

**APPLE**

P	R	I	N	C	E	S	S	A	P
S	H	M	D	S	M	A	X	P	U
E	P	T	S	Q	I	N	C	P	D
K	M	Q	T	F	R	C	O	L	W
Z	U	W	E	P	R	A	F	E	A
V	D	H	P	G	O	S	F	F	R
Q	D	R	M	R	R	T	I	W	F
S	W	O	A	P	T	L	N	G	P
O	X	A	F	O	R	E	S	T	O
G	N	C	V	C	V	W	M	M	U

*See page 14 for Word Search key.*



**Who's the fairest of all  
in your life? Draw their  
picture in the mirror.**



# Who's Who



## DEREK MANSON (*Dwarf Four*)

I am so happy that you are here at the theatre, live and in person, to see *Snow White*! You might have seen me as Snoopy in SCR's production of *You're A Good Man, Charlie Brown*. In addition to chasing Red Barons and singing for suppers, I've also played a peach-riding centipede, a wicked aunt, and a skateboarding tiger boy, among others. I love doing theatre because it allows me to imagine how others may think and feel, and to discover their stories. In my opinion, that's what makes theatre not only fun and exciting (which it is); it's also what makes theatre important. And one of the most important parts of the theatre is YOU, there, in the audience, watching and sharing the story we're telling. Thanks for being part of the show!



## CANDACE NICHOLAS-LIPPMAN (*Snow White*)

Now my story is a long one and you have a show to watch, so let's just skip to the good stuff, shall we? My journey really began after receiving my degree from college and taking the big leap, moving to Los Angeles to pursue my dreams of being a full-time artist! Sounds easy, but oh boy, it wasn't! I've encountered a lot of hardships; but through faith and hard work, I was determined to never give up on my dreams! And I'm so happy I didn't, cause guess what, little ones? I am doing it. I am living my dream! I get to act on TV, write and perform poetry, coach and teach young ones like yourselves; but most importantly, today, I get to bring the wonderful story of *Snow White* to life for you! So enough about me. Tonight is about YOU! I am performing for you. I hope you smile 'til your cheeks hurt, laugh 'til your belly aches and feel inspired to go after your dreams, too! Because no matter how young you are or where you come from, your dreams matter! ENJOY THE SHOW!





# in the Cast

## **PHILLIP MATSUURA** (*Keyboard Player*)

I am an Orange County-based pianist nearing the completion of a Doctor of Musical Arts at the University of Southern California. Having graduated from Northwestern University in Illinois with a Master of Music and Oberlin Conservatory in Ohio with a Bachelor of Music, I can say with confidence that cold weather is not my speed, so I decided to seek further education in a warm climate. I ended up back in my home state of California. My favorite way to make music is to do so while collaborating with others, and while my career thus far has involved considerable experience working with opera singers, instrumentalists and ballet dancers, this production is my first time collaborating with actors!

## **MATTHEW MCGRAW** (*Horn Player*)

I have been a freelance trombonist in the Los Angeles area for over 20 years. I started band in junior high school. It was a class I didn't even pick as an elective. After I left high school, I went to a local college and met older musicians, who showed me what I could do with music outside of school. Through music, I've toured the United States, Southern Europe, Japan and the Caribbean. I never thought I would make a living playing music and entertaining people of all ages, all over the world.

# Artist Bios

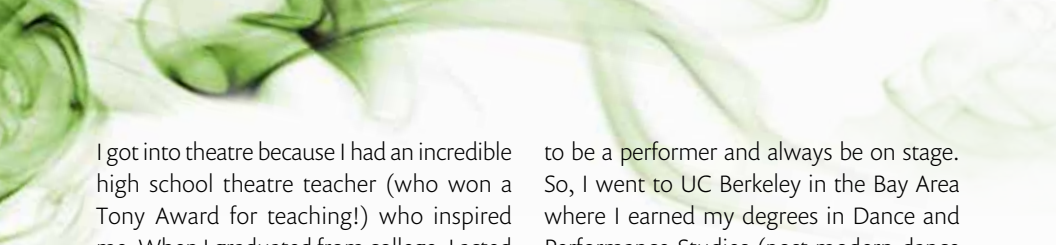
## **GREG BANKS** (*Adapter*)

I live in the UK, I've got four children and five chickens! I never expected to be a writer. I started out as an actor in a small company of six friends, performing our own work. As well as acting, I also directed, built scenery, designed posters and helped write the scripts, which we all did together. We performed anywhere that wasn't a proper theatre—village halls, beaches, woods, playgrounds, quarries. Hard work, but tons of fun! Now, as I sit at my desk writing *Snow White* on my own, I imagine those old friends sitting on my shoulders, keeping

an eye on what I do! Walk past my window and you might hear me doing crazy voices, even jumping around trying to figure out how one actor can play all seven dwarfs in the same scene! Mind boggling, but still fun!

## **H. ADAM HARRIS** (*Director*)

My name is H. Adam Harris, but everyone calls me H! I'm an actor, teacher, and the director of this production of *Snow White*. This is a special production, adapted by my friend Greg Banks. I've acted in two of his plays: a 5-person *Jungle Book* (I played Baloo) and a 5-person *The Hobbit* (I played Smaug).



I got into theatre because I had an incredible high school theatre teacher (who won a Tony Award for teaching!) who inspired me. When I graduated from college, I acted on stages, narrated family concerts with orchestras, and led story time with local libraries. As a director, I believe in telling heart-first stories that center possibility, tenderness, and grit. All things you'll see in this tale of *Snow White*! When I'm not directing, I work here at SCR as the Artistic & Audience Engagement Associate – enjoy the show!

### **FRED KINNEY (Set Designer)**

I build the models and create the drawings that the carpenters and the painters use to build the scenery that you see on stage. This is my 12th production at SCR. For past shows, I designed various locations such as the neighborhood for *Last Stop on Market Street*, and interiors and exteriors that *Nate the Great* traveled to in order to unravel the mystery. For *A Year with Frog and Toad*, a marsh, the scaffold playground that lit up for *Pinocchio*, the forest for *Robin Hood* and the Elephant for *The Emperor's New Clothes*. When I was a small boy, I thought I might become a painter, sculptor or an architect. But in high school, I started to design the scenery for our school productions and really enjoyed it—and I still do. I'm the proud father of Gigi and Kate, who will be seeing *Snow White*.

### **RAMZI JNEID (Costume Designer)**

Hi friends! My name is Ramzi and I designed the costumes for this play! When I was your age, I was enrolled in theatre classes, dance classes, voice lessons, piano lessons, etc. I was often the only boy in the dance classes, so I was always center stage which was nice! As I grew up, I thought I wanted

to be a performer and always be on stage. So, I went to UC Berkeley in the Bay Area where I earned my degrees in Dance and Performance Studies (post-modern dance and questioning what is considered a performance) as well as Earth and Planetary Science (rocks, space and planets). But they wanted all their performers to understand how theatre is made, so I had to take a technical theatre class (costumes, sets, lights or sound). That's when I first fell in love with Costume Designing! Ever since college, I've designed costumes for a handful of musicals and plays such as *Legally Blonde* for the Berkeley Playhouse, *Jungle Book* and *The 25th Annual Putnam County Spelling Bee* for Mill Mountain Theater in Roanoke, Virginia, and most recently *Nicholas Nickleby*, *Electric Darkness*, *Radio Play Disaster* and *Snow Angel* for the Youth Conservatory at South Coast Repertory. I'm so excited to be sharing my work with you and I hope you enjoy this fun, heart-warming tale!

### **ANDREA HEILMAN (Lighting Design)**

(she/they/her/them) was sucked into the world of design when they helped make a tree that spun around, had lots of shelves, and could turn people into bears through the magic of theatre. The discovery of this magic and their ability to be part of the team that is honored with the quest to tell stories has led to traveling the world, eating lots of amazing food, and (best of all) sharing it with an amazing cast of humans. They hope you will find the spark of something that excites you and use that spark to guide you through life's many twists and turns. You might have seen their work on *American Idiot* at the Chance Theater over the summer or had them for class at California Lutheran University, where they are the Head of Design.



**LEELA OLESZKIEWICZ (Composer/  
Arrangements/Musical Direction)**

I am a Los Angeles-based singer, songwriter, composer, and sound designer, who was born in Poland, but over the past 18 years, I've lived in New York City, Chicago, and the Bay Area. I studied piano, voice, and music composition at Mills College, where I also learned how to produce unusual sounds by doing things like placing screws on piano strings or standing bamboo chopsticks between them. I spend most of my time in theatre making beats, writing music for different instruments, and coming up with songs that will be performed by actors. My favorite part of the show? Seeing the audience clap, dance, sing along, or hum the songs as they leave the theater!

**NATALIE FIGAREDO (Stage Manager)**

I started stage managing many years ago in a school called California State University, Long Beach where I worked on musicals, plays, and Shakespeare! Then I went to school in London, England where I learned how to build sets, focus lights and production manage. Plus I got to see cool shows like *Matilda* and *Charlie and the Chocolate Factory*. I also used to work at Disneyland with Mickey, Minnie, Donald and Goofy! But my favorite thing to do is work on the Theatre for Young Audiences and Families plays here at SCR! I've worked on *Amos and Boris*, *Tales of a 4th Grade Nothing*, *Junie B. Jones is Not a Crook!*, *Mr. Poppers Penguins*, *The Night Fairy* and *Robin Hood*. Also my favorite food is mac and cheese.

**GLORIA PEREZ (Assistant Stage  
Manager)**

As long as I can remember, I've always loved the idea of storytelling. So, when I saw my first show *Beauty and the Beast*, I fell in love with theatre immediately. I went to California State University, Fullerton to get my B.A. so I could continue learning and growing. That's where I found out that I enjoyed making everything happen behind the scenes. That's me, making sure everyone is ready to go, seeing that every little prop from a cow on wheels to glittery shoes ended up on stage, or even making giant set pieces fly up and away. I am very grateful to every teacher, mentor and support system person who has helped get me here today to share the story of my favorite princess. "Remember you're the one who can fill the world with sunshine."— Snow White

# Word Search Key (Answers)



ACTORS' EQUITY ASSOCIATION, founded in 1913, is the U.S. labor union that represents more than 50,000 professional actors and stage managers. Equity endeavors to advance the careers of its members by negotiating wages, working conditions and providing a wide range of benefits (health and pension included). Member: AFL-CIO, FIA. #EquityWorks.



South Coast Repertory respectfully acknowledges its presence on the traditional land of the Tongva People. With gratitude, we honor the land and the people, past and present, who have stewarded it through the generations.



# Acting Classes



SCR's Summer Players in *Matilda The Musical*

From students to parents to alumni, everyone has high praise for how acting classes in the SCR Theatre Conservatory provide guidance for success both on the stage and in life. It's no wonder that *ParentingOC* readers have voted SCR tops for having "The Best" acting classes seven years in a row. Each year, more than 2,000 kids, teens and adults are enrolled (fall, winter, spring and summer) in basic acting skills classes, scene study, musical theatre, improvisation and more. The benefits include better communication skills, self-confidence and self-esteem, and analytic thinking.

"We tell our students that the skills it takes to succeed as an actor are the same skills that will help them enjoy a richer, fuller life," says Hisa Takakuwa, who directs the conservatory and education programs. She and the faculty delight in seeing students have those "a-ha" moments and watching lives changed for the better. Read on to hear about the benefits of studying acting at SCR.

**"SCR had a huge impact on my life. I took classes with a great teacher and the atmosphere was fun, creative and encouraging. I really discovered a passion for drama here and am thankful for the experience."**  
—Ryan Eggold, actor, "*New Amsterdam*," "*The Blacklist*" and "*Entourage*."

**"We have seen each of our kids blossom as they developed confidence, self-esteem and skills that will help them in whatever fields they pursue. They have learned to think on their feet, to work well with others and to look within themselves for the answers."**—Laura Forbes, parent

**"SCR shaped me into the person I am. I feel like I grew up, made the most incredible friends and discovered my love for acting at this theatre. I feel lucky that I had the opportunity to study acting here."**  
—Rachel Charny, alumna

**Learn more about acting classes at [scr.org/classes](https://scr.org/classes).**



# The Holiday Tradition Continues...



Richard Doyle as  
Ebenezer Scrooge

Charles Dickens'

## CHRISTMAS CAROL

Adapted by **Jerry Patch**  
Directed by **Hisa Takakuwa**

**Nov. 26 – Dec. 24, 2022**

***Ages 6+ Children under age 6 will not be admitted.***

From the first “Bah humbug” to the final “Wassail,” this timeless classic is sure to rekindle your family’s holiday spirit.



## South Coast Repertory

[scr.org](http://scr.org) (714) 708-5555